

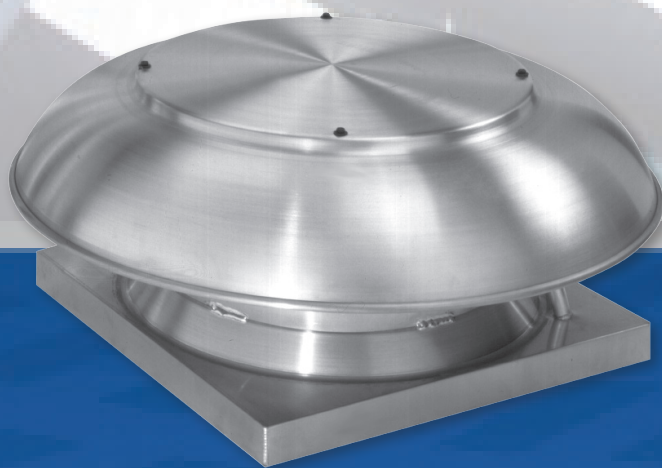


# DOMEX AXIAL

Roof Ventilators

## TABLE OF CONTENTS

Introduction, Certifications & Listings	2
Options & Accessories	2
Engineering Specifications	2
Dimensional & Performance Data	3



BULLETIN DXA15

## INTRODUCTION

### Domex Axial Supply & Exhaust Fans

PennBarry axial flow ventilators provide excellent value for supply (DAS) and exhaust (DAE) applications in kitchens, office buildings, bakeries, laundries, factories, warehouses, foundries and locker rooms. They have an attractive low profile silhouette and operate efficiently at low and medium pressures.

Housings are constructed of durable, spun aluminum with integral bird screens. Installation is easy and simple for roof or wall mount applications. Integral wiring conduit is standard.

#### Model: DAS

- Static pressure up to 0.5" wg.
- Flow capacity up to 2,460 CFM

#### Model: DAE

- Static pressure up to 1.125" wg.
- Flow capacity up to 2,400 CFM

## CERTIFICATIONS & LISTINGS



Models DAE and DAS are ETL listed, file #3049729-002 and comply with UL705 (Electrical) Standards and CSA Standard C22.2, No. 113.

## OPTIONS & ACCESSORIES

### Backdraft Dampers

Backdraft dampers are available for either gravity or motorized operation (motor kit optional). Dampers feature square galvanized steel frame, multi-leaf, roll formed aluminum blades with nylon bearings.

### Prefabricated Curbs

Roof curbs are available in a variety of sizes. Galvanized steel unibeam curbs are the most popular. For a complete listing of all curb types and sizes available, please consult the latest PennBarry Curb brochure.

## ENGINEERING SPECIFICATIONS

### DAS - Supply Unit

Direct drive axial roof supply fans, shall be Domex Axial DAS, supplied by PennBarry. Ventilator housings shall be heavy gauge spun aluminum construction with galvanized steel support members and shall be weatherproof, incorporating an integral weather baffle at the top of the air shaft. Bird Screen is included. An electrical conduit shall be furnished as an integral part of the housing to provide a clear channel for field wiring. Propellers shall be statically and dynamically balanced. Motors shall be Totally Enclosed (TE), continuous duty, and positively cooled. Each fan shall be ETL listed to comply with UL705 (Electrical) standards and CSA standard C22.2, No. 113.

### DAE - Exhaust Units

Direct drive axial roof exhaust fans, shall be Domex Axial DAE, supplied by PennBarry. Ventilator housings shall be heavy gauge spun aluminum construction with galvanized steel support members and shall be weatherproof, incorporating an integral weather baffle at the top of the air shaft. Bird Screen is included. An electrical conduit shall be furnished as an integral part of the housing to provide a clear channel for field wiring. Propellers shall be statically and dynamically balanced. Motors shall be Totally Enclosed (TE), continuous duty, and positively cooled. Each fan shall be ETL listed to comply with UL705 (Electrical) standards and CSA standard C22.2, No. 113.

#### Model

DAS = Axial Supply Fan  
DAE = Axial Exhaust Fan

#### Unit Size

10, 12, 14, 18

#### Damper

0 = None  
BDD = Back Draft Damper  
MD1 = Motor Operated Damper 115V  
MD2 = Motor Operated Damper 230V  
MD4 = Motor Operated Damper 460V  
X = Special

#### Roof Curb

See selection software.

#### Slope

0 = None  
S = Single  
D = Double

#### Metal Liner

0 = None  
L = Metal Liner

#### Damper Holding Plate

0 = None  
P = Damper Holding Plate

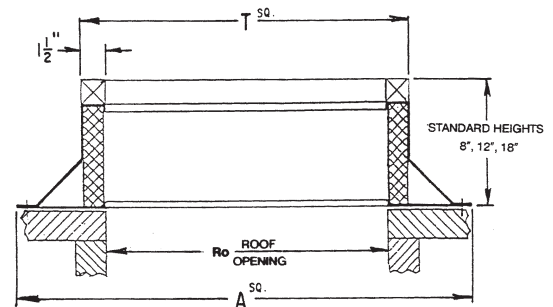
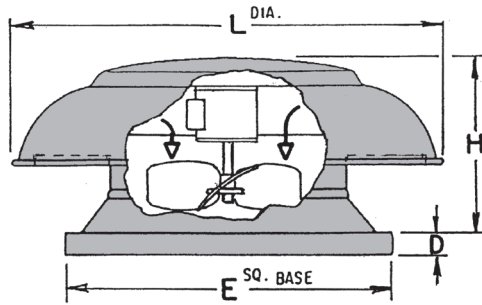
#### Neoprene Gasket

0 = None  
G = Gasket

#### Wooden Nailer

0 = None  
W = Wooden Nailer

## DAS



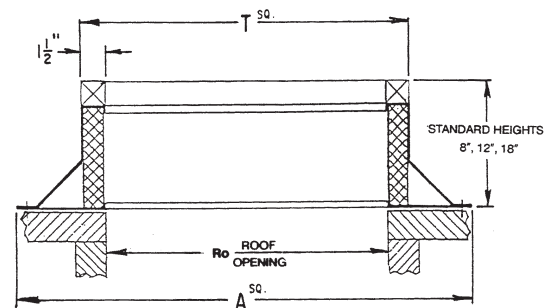
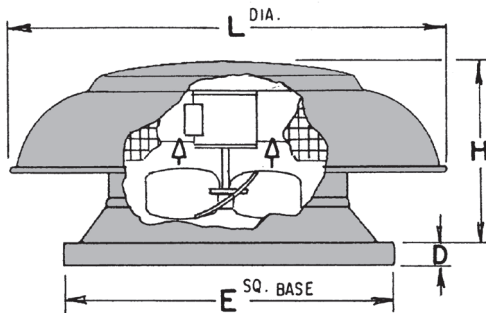
Model	L	H	D	E	T Sq.	A Sq.	Ro Sq.	Damper OD	Weight
DAS14	27 5/16	12 5/8	2	21	19 1/2	27	16	15 3/4	45 Lbs.
DAS18	33 9/16	14 3/8	2	26	24 1/2	32	20	19 3/4	67 Lbs.

All dimensions in inches.

Model	Motor HP	RPM	TS	Static Pressure (in. w.g.)				
				0.00"	.125"	.250"	.375"	.500"
DAS14	1/6	1100	4030	1450	1174	904	670	439
DAS18	1/3	1100	5180	2460	2220	1980	1639	1300

All dimensions in inches.

## DAE



Model	L Dia.	H	D	E Sq.	T Sq.	A Sq.	Ro Sq.	Damper OD	Weight
DAE10	18 5/16	9 3/4	2	19	17 1/2	25 1/2	13	12 3/4	24 Lbs.
DAE12	20 5/16	10 1/4	2	19	17 1/2	25	13	12 3/4	32 Lbs.
DAE14	27 5/16	12 5/8	2	21	19 1/2	27	16	15 3/4	45 Lbs.
DAE18	33 9/16	14 3/8	2	26	24 1/2	32	20	19 3/4	67 Lbs.

All dimensions in inches. Standard curb heights are 8", 12" and 18" including wood nailer. "T" dimension of curb is 1 1/2" less than the dimension of the inside base of the fan ("E"). "Ro" refers to the Roof Opening. "E" dimension is the inside base of fan.

Model	Motor HP	RPM	TS	Static Pressure (in. w.g.)									
				0.00"	.125"	.250"	.375"	.500"	0.625"	0.750"	0.875"	1.000"	1.125"
DAE10	1/30	1500	3927	524	333	226	120	-	-	-	-	-	-
DAE12	1/10	1500	4712	830	710	620	522	436	357	270	175	78	-
DAE14	1/6	1100	4032	1160	899	786	646	521	384	236	-	-	-
DAE18	1/3	1100	5184	2400	2034	1628	1491	1293	1084	881	662	433	176

Speed (RPM) shown is nominal and performance is based on actual speed of test. Performance shown is for installation Type A; Free Inlet, Free Outlet. Performance rating includes effect of bird screen in the air stream.



## PennBarry Product Solutions

---

### COMMERCIAL

Roof & Wall Exhaust Centrifugal Fans  
Ceiling, Wall, & Inline Centrifugal Fans  
Roof Supply Centrifugal Fans  
Square & Round Centrifugal Fans  
Wall Mounted Axial Fans  
Hooded Roof Axial Fans  
Upblast Roof Axial Fans  
Gravity Ventilators  
Roof Curbs

### INDUSTRIAL

Utility Vent Sets  
Freestanding Centrifugal Fans  
Industrial & Material Handling Fans  
Tubular Centrifugal Inline Fans  
Mixed Flow Centrifugal Fans  
Plug & Plenum Fans  
Wall Mounted Propeller Fans  
Tube Axial Fans  
Vane Axial Fans  
Bifurcator Fans  
Fume Exhaust

### ENERGY RECOVERY

Outdoor Units  
Indoor Units

### KITCHEN VENTILATION

Kitchen Hoods  
Make-Up Air Units  
Exhaust Fans



PennBarry is proud to be your preferred manufacturer of commercial and industrial fans and blowers. Learn how PennBarry can assist you in your next application by contacting your PennBarry Representative or visiting us on the web at [www.pennbarry.com](http://www.pennbarry.com).

PennBarry | [www.pennbarry.com](http://www.pennbarry.com) | [pennbarrysales@pennbarry.com](mailto:pennbarrysales@pennbarry.com) | tel: 972.212.4700 | fax: 972.212.4702

*PennBarry reserves the right to make changes at any time, without notice, to models, construction, specifications, options, availability, etc. This bulletin illustrates the appearance of PennBarry products at the time of publication. View the latest updates on the PennBarry website.*

© Copyright 2015 PennBarry. All Rights Reserved. DOMEX AXIAL MARCH 2015